

4 LINK CLOSER™ MOUNTING INSTRUCTIONS

Case IH 800-1250 Series Planters

Before working on your planter or drill

DANGER: When storing or working on the planter always install cylinder stops or place the planter on stands to prevent personal injury or damage to the attachments.

PLEASE: Read instructions completely and verify all package contents before beginning installation



NOTE: The spring eye bolt has intentionally been left loose from the factory. **Install this bolt to the OPPOSITE side of the front G2/G3 arm.** This will prevent the G2/G3 arm bracket from hitting the eye bolt.

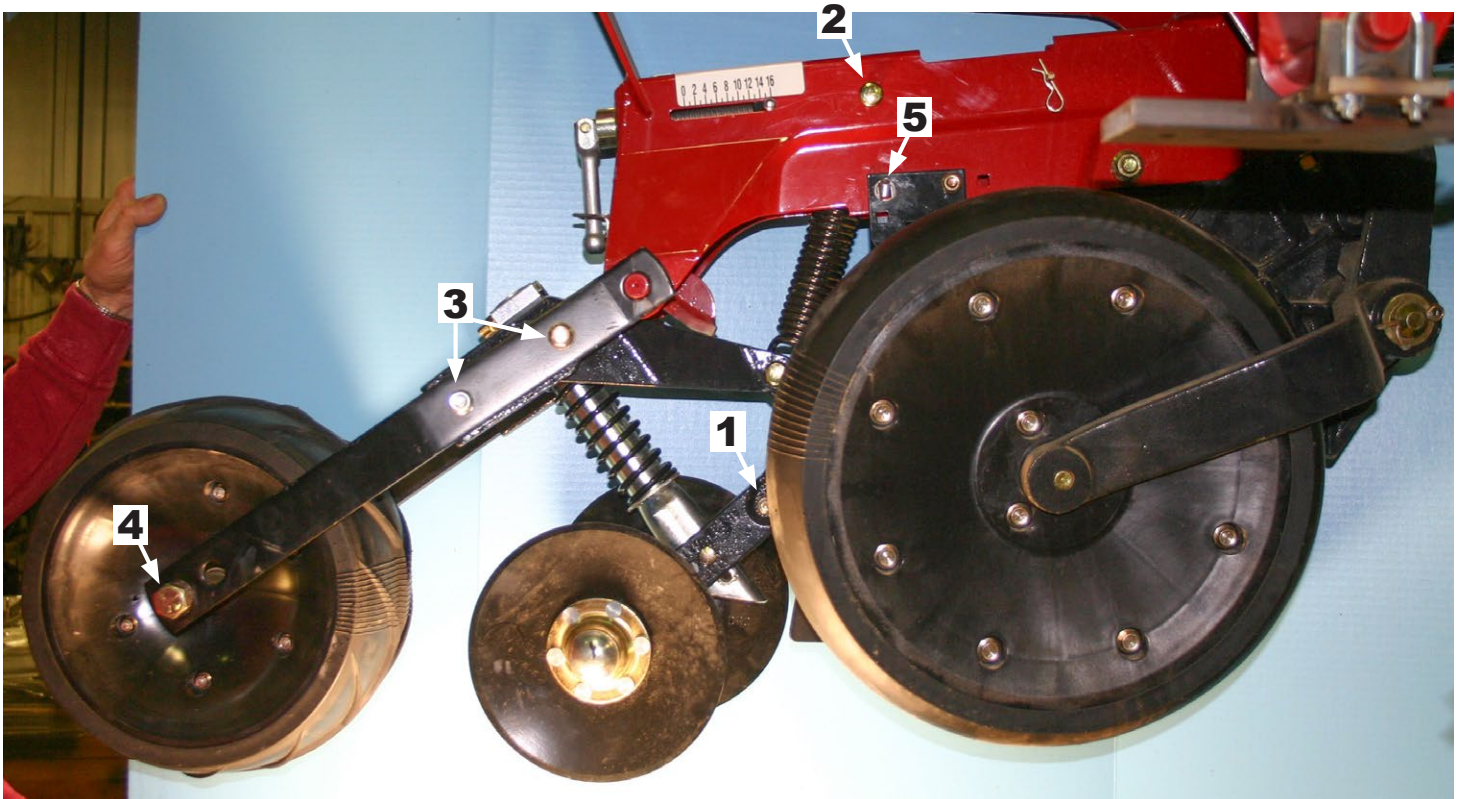


4 Link Closer for Case IH Package Contents (per single row)

Item	Quantity
1/2" x 1-1/2" Bolt	2
1/2" Lock Nut	2
1/2" Flat Washer	2
3/8" x 3" U-bolt	2
3/8" Nut	8
5/16" x 2-1/2" Bolt	1
5/16" Nyloc Nut	1

REMOVING CASE IH PRESS TIRE & COVERING DISC ASSEMBLY

- Step #1:** Remove bolt that mounts covering discs assembly to rear of seed boot.
- Step #2:** Remove press tire down pressure spring and upper pin.
- Step #3:** Remove two bolts in press tire arm (one side is all that is needed).
- Step #4:** Loosen press tire through bolt. The whole assembly will now come off of unit.
- Step #5:** Remove opener disc blade scraper back bolts (on both sides).



OVER →

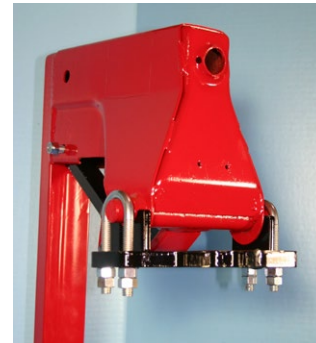
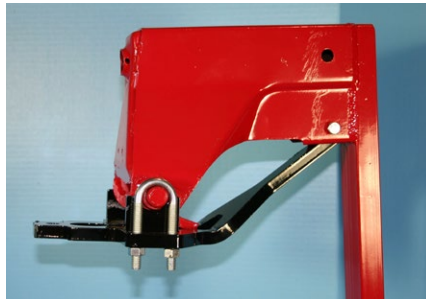
4 LINK CLOSER™ MOUNTING INSTRUCTIONS

Case IH 800-1250 Series Planters

(CONTINUED)

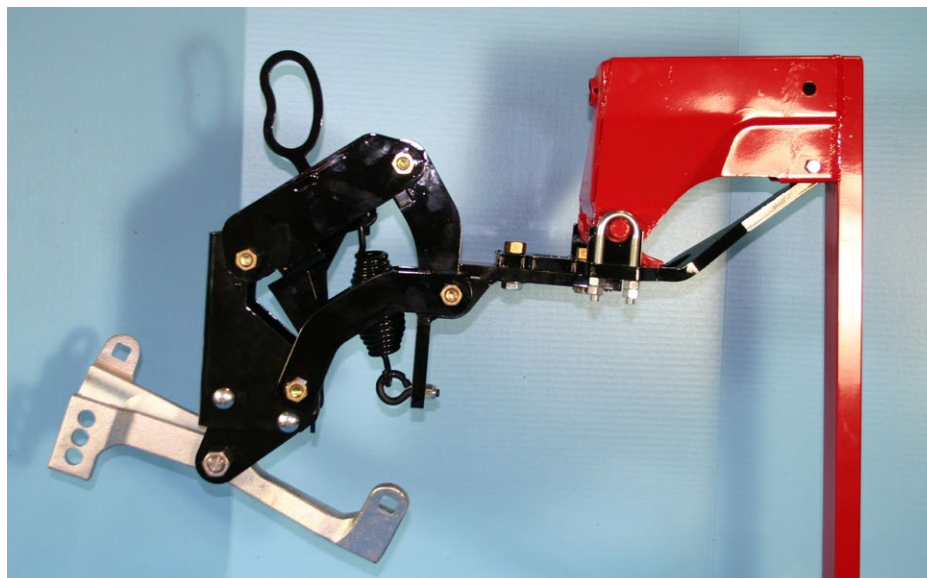
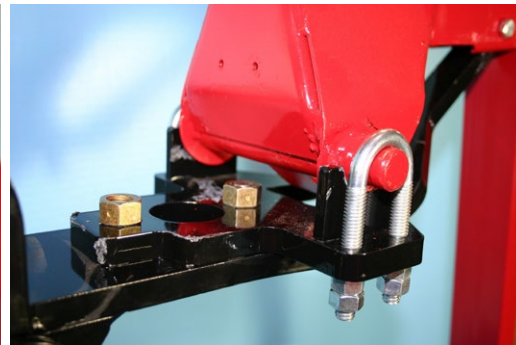
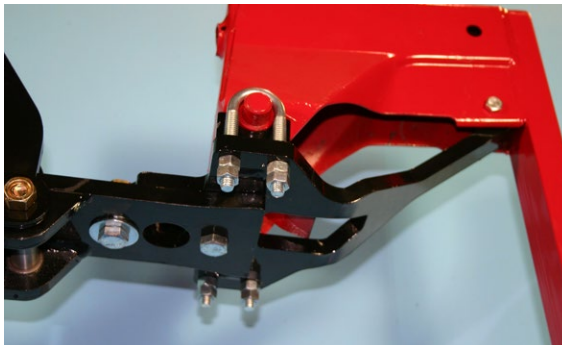
INSTALLING MOUNTING BRACKET TO ROW UNIT

- Step #6:** Slide pipe mounted end up into row unit between opener disc scraper and install 5/16" x 2-1/2" bolt with 5/16" nyloc lock nut into rear scraper mounting bolt hole.
- Step #7:** Pivot up the assembly rearward so the 'u' shaped saddles cradle old press tire mounting pin. Install 3/8" x 3" u-bolts and tighten them down with 3/8" nuts. Tighten the 5/16" scraper bolt.



INSTALLING 4 LINK CLOSER TAIL SECTION

- Step #8:** Using the 1/2" x 1-1/2" bolts, bolt the 4LC tail section under the Case IH tail section mounting bracket. Place the 1/2" flat washer between the back bolt and tail section. Align tail section with row unit (so it trails straight). Tighten both bolts down with the 1/2" lock nuts.



Final Assembly