

# 4 LINK CLOSER™ MOUNTING INSTRUCTIONS

## Great Plains Planters

Before working on your planter or drill

**DANGER:** When storing or working on the planter always install cylinder stops or place the planter on stands to prevent personal injury or damage to the attachments.

**PLEASE:** Read instructions completely and verify all package contents before beginning installation



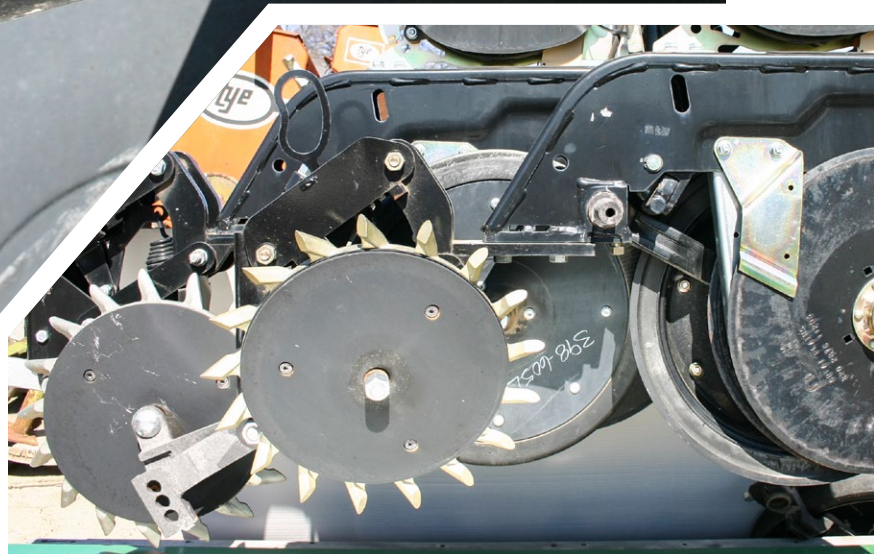
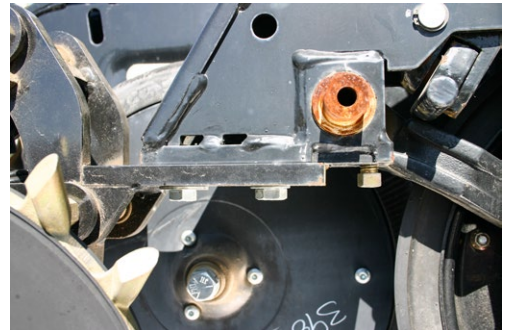
**NOTE:** The spring eye bolt has intentionally been left loose from the factory. **Install this bolt to the OPPOSITE side of the front G2/G3 arm.** This will prevent the G2/G3 arm bracket from hitting the eye bolt.



4 Link Closer for Great Plains Package Contents (per single row)	
Item	Quantity
4 Link Closer Assembly . . . . .	1

**#1:** Remove the Great Plains press tire and tail section assembly: Loose and remove the two vertical bolts holding tail section mount and spring assembly to row unit. **SAVE BOLTS!**

**#2:** Using these bolts, install 4LC on bottom of row unit where the mount was removed. **Align with row unit and tighten bolts.**



Final assembly of the 4LC with G2 fertilizer arm and Zipper closing wheels