

REBOUNDER® MOUNTING INSTRUCTIONS

Vansco Seed Tube

Before working on your planter or drill

DANGER: When storing or working on the planter always install cylinder stops or place the planter on stands to prevent personal injury or damage to the attachments.

PLEASE: Read instructions completely and verify all package contents before beginning installation.

NOTE: Vansco is a Canadian made seed tube that companies such as Kinze and Monosem sometimes use on their planters. It is identified by having a backside that lips over the edges of the sides of the tube.

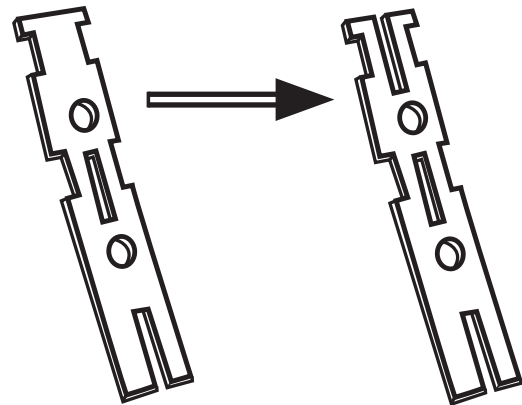
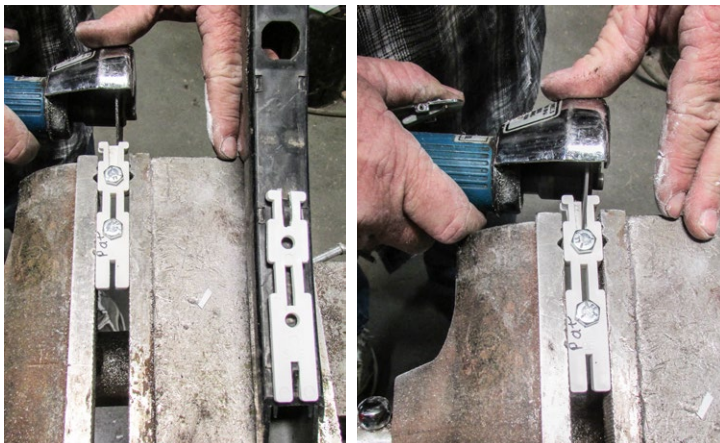


Rebounder Package Contents (per single row)	
Item	Quantity
Sawtooth Rebounder	1
Sawtooth Insert	1
Tie Strap	2
Instruction Sheet	1

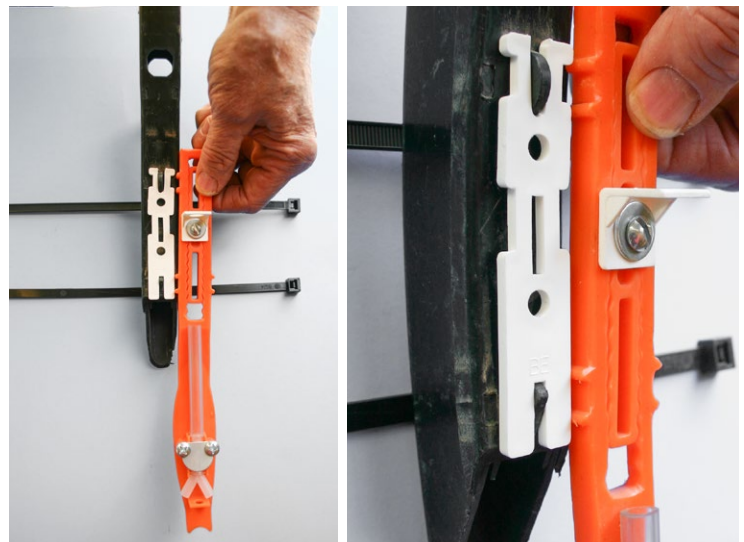
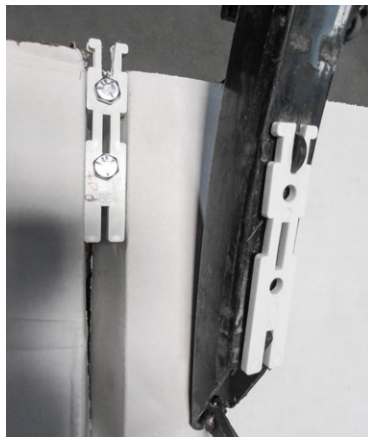
Bracket Package Contents (per single row)	
Item	Quantity
Spacer Bracket	1

STEP #1: If applying liquids in furrow with the Rebounder, attach either Y-Not Split It, Hose Holder, or Straight Shot kit by following kit directions.
INSTALL KIT BEFORE INSTALLING REBOUNDER TO PLANTER UNIT.
 See kit instructions.

STEP #2: If you did not receive a spacer with slots in both the bottom and top of the spacer, you would have received a spacer with a slot in the bottom side only.
 Using a die grinder and the bottom slot from another spacer bracket as a guide, grind slots out of the top of the spacer brackets.



STEP #3: Slip spacer on over notches in seed tube.



STEP #4: Place Rebounder over the spacer, lining up the notches in the holes in the sawtooth insert.

Where the Rebounder attaches on, hold in place with tie straps. Tie straps fit inside each of the two sets of notches on the outsides of the Rebounder.

Rebounder covered by one or more of the following U.S. patents: 5,640,915; 5,918,557; 6,082,275; 6,283,050; 6,453,832; 6,763,773 and 7,121,216.