

# REBOUNDER™ & LIQUID FERTILIZER TUBE MOUNTING INSTRUCTIONS

## John Deere N500C Air Drill with ProSeries™ Openers

(Read Instructions Completely before Beginning Installation)

**Before working on your planter or drill**

**DANGER:** When storing or working on the planter or drill always install cylinder stops or place the planter or drill on stands to prevent personal injury or damage to the Rebounder. **WARNING:** Do not roll back or back up the planter or drill in or on the ground as this can result in damage to the Rebounder.

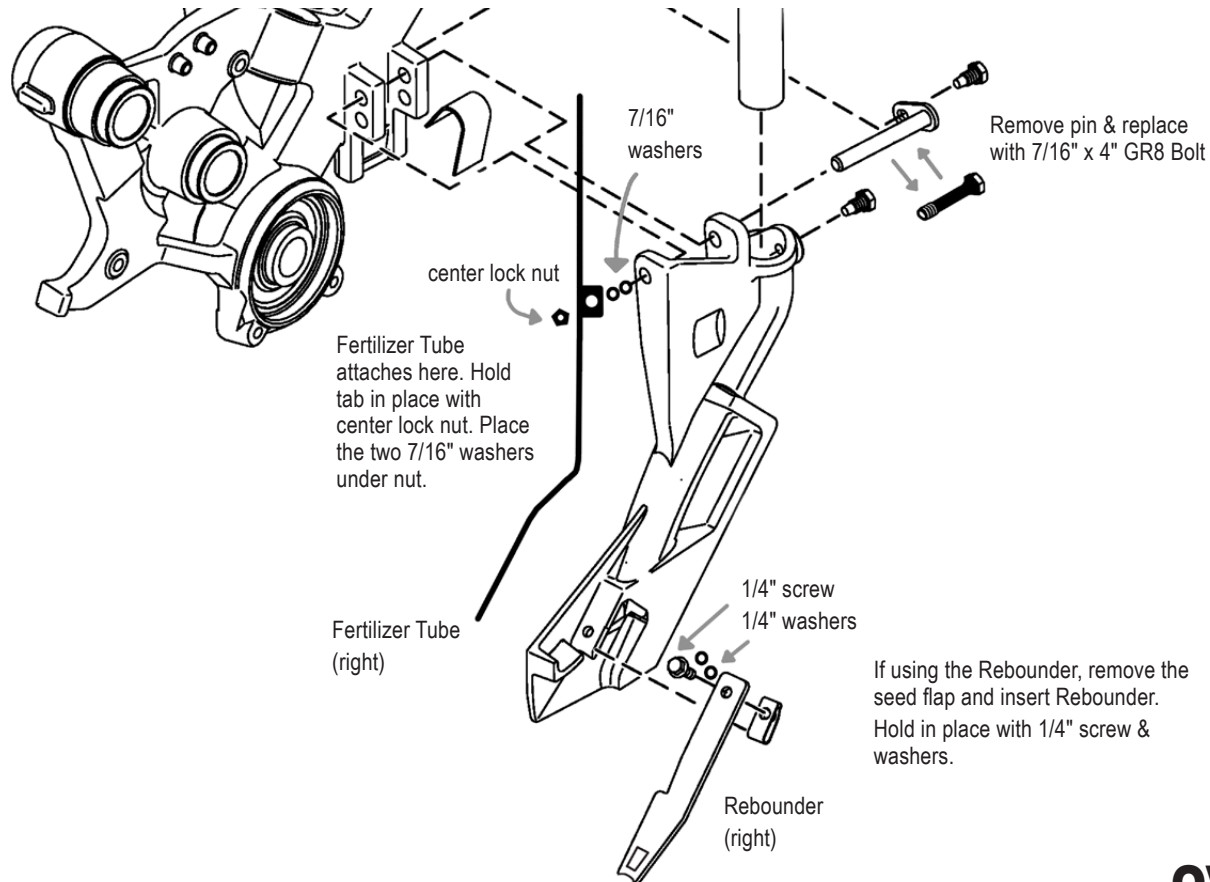
### Mounting Instructions

Before you begin, verify all items listed in the "package contents" table at the right.

**NOTE:** Drills made in the last 2-3 years probably need metric bolts

- #1: Pull metal seed tube out of top of seed boot (to get to pin holding seed tube).
- #2: Take bolt out of seed flap at bottom of seed boot.
- #3: Now install liquid fertilizer tube at top and bottom of seed boot.
- #4: Replace the pin at the top of seed boot with the kit's 4" G48 bolt. Slide liquid fertilizer tube in from the top by placing painted tab over bolt (**yellow tab is left and green tab is right** [fig. (a) on back]).
- #5: Put two 7/16" washers over bolt and hold in place with kit's center lock nut [fig. (b) on back]. Fertilizer tube needs to be positioned in bottom of boot where seed flap or Rebounder goes [fig. (c) & fig. (d) on back]. If using your old seed flap, cut notch out so tube can be placed beside flap. Do not tighten top bolt until you have Rebounder or seed flap installed.
- #6: If using Rebounder, install Rebounder at bottom of seed tube. Place the two 1/4" washers over the Rebounder and insert 1/4" screw to hold in place [fig. (c) & fig. (d) on back].
- #7: Tighten top bolt and bottom screw. Replace seed boot in your drill.

Liquid Fertilizer Tube Package Contents (per single row)	
Item	Quantity
Stainless Steel Tube .....	1
7/16" Washer .....	2
1/4" Washer .....	2
1/4" Screw .....	1
7/16" x 4" GR8 Bolt .....	1
Center Lock Nut .....	1
Instruction Sheet .....	1
Rebounder Package Contents (per single row)	
Item	Quantity
Rebounder for Stainless Tube .....	1



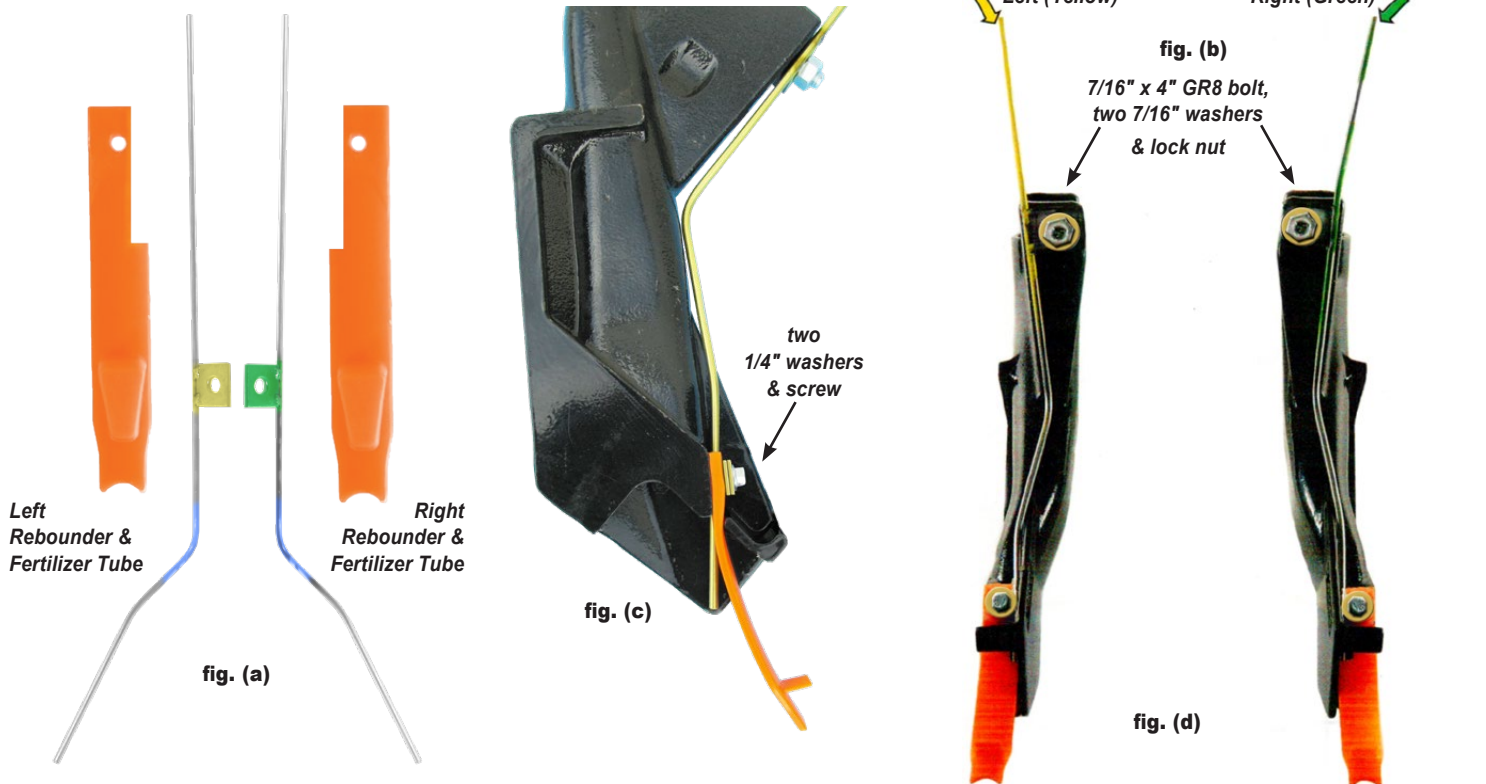
**OVER**

Rebounder covered by one or more of the following U.S. patents: 5,640,915; 5,918,557; 6,082,275; 6,283,050; 6,453,832; 6,763,773 and 7,121,216.

# REBOUNDER™ & LIQUID FERTILIZER TUBE MOUNTING INSTRUCTIONS

## John Deere N500C Air Drill with ProSeries™ Openers (CONTINUED)

Depicted: Old Style 1890 Drill; Bolts similar to N500C Drill



### Troubleshooting

In some cases, the top ends of the tubes might need to be shortened or cut off to add strength to the tab that is welded on at the top end of the tube. You may have to cut as much as 6" off the top of the tube [fig. (e)], depending on the manifold system you have.

If you are using a manifold system that runs down the rocker arms of the drill where the row units are bolted, then you will leave the full length of the tube and use a short (2' +/-) hose connecting to the stainless tube that doesn't have to be tied to anything.

If you are using a manifold system on the center of each section of the drill and running the fertilizer hoses strapped to the seed hoses, then you need to leave enough slack on the fertilizer hose that connects to the stainless tubes so that the flexing of the seed tubes won't break the welded tab on the fertilizer tube. In this case you should cut the stainless tube off on the top side to relieve the flexing pressure as you travel in the field [fig. (e)].

On some drills you may have to bend the top end of the tube and re route fertilizer hoses being careful not to break the welded tab off the tube. Placing the tube in a vice to bend it will help keep the welded tab from breaking. Tube may be bent any way [fig. (f)].

