

MOHAWK CLOSING WHEEL

MOHAWK FEATURES—DESIGN—BENEFITS

- ▶ Feathers the soil in the seed V with its wide track design
- ▶ Designed to break up compaction without being too aggressive
- ▶ 1" spike will not get too close to or disturb seed
- ▶ Allows for better seed-to-soil contact
- ▶ Stitches seed V shut
- ▶ Uses existing wheels and bearings, and replaces tire with Mohawk ring, which saves you \$\$\$!
- ▶ Breaks down compacted sidewall and closes the furrow at the same time
- ▶ Longer wear, heavy duty cast steel spikes

ELIMINATES COMMON PROBLEMS

- ▶ Compacts the soil better than straight-fingered wheels
- ▶ Moves soil with minimal compaction into the furrow
- ▶ Eliminates air pockets
- ▶ On a hot windy day the trench won't crack back open

SUITABLE FOR MANY SOILS

- ▶ Made to work in tough soils
- ▶ Works in no-till or conventional

EASE OF INSTALLATION

- ▶ Can be used with or without the G2 liquid fertilizer disc
- ▶ Easy to install



IT'S A FACT:

Sidewall compaction left from double disc openers on planters makes it hard for standard closing wheels to properly close the seed V. Especially in wet heavy textured soils, standard press wheels tend to smear the soil over the seeds and do not break up the sidewall compaction. Then when a hot windy day comes after planting in wet soil conditions, the seed V

Furrow left open with rubber closing wheels

will often crack back open, exposing the seeds.

If the seed V does stay shut after planting with standard closing wheels, many times the sidewalls of the seed V stay compacted, not letting the roots of the plants penetrate the sidewalls. This keeps the roots from building a good brace root system, and the plants will tend to fall over later in the season.

Mohawk Wheels eliminate these problems.

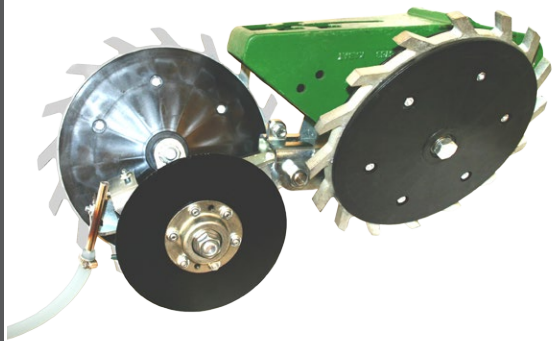
WWW.SCHAFFERT.COM

Schaffert
manufacturing & sales

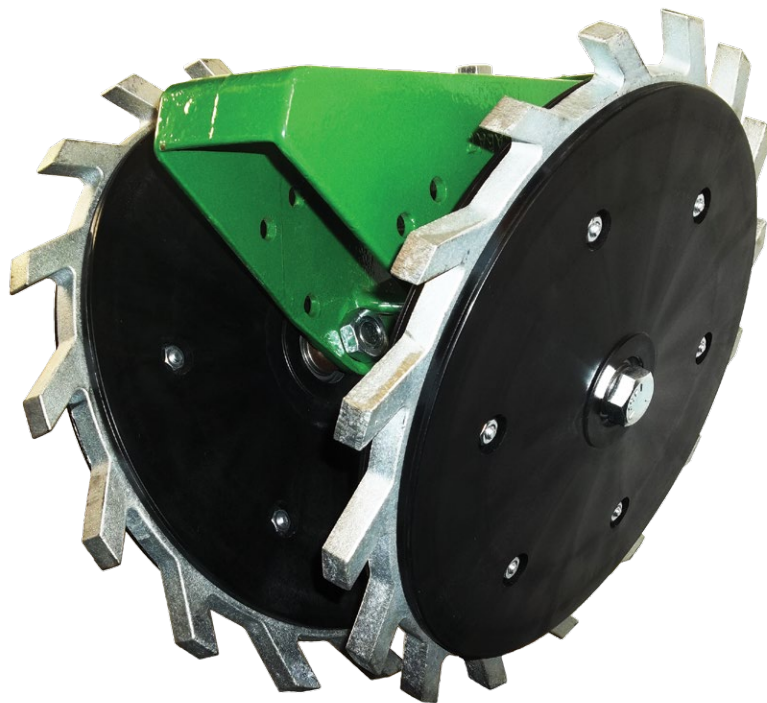
71495 ROAD 397
INDIANOLA, NE 69034
SALES@SCHAFFERT.COM

308-364-2607
800-382-2607

MOHAWK CLOSING WHEEL



The Mohawk works very well with the G2 2x2 liquid fertilizer disc



M.D, KY-

The best addition I added to the planter this winter has been the Mohawk Closing Wheels.

Half of my planter were a competitor's wheel, and the other half Mohawks. Both of these wheels do a better job than the stock closing wheels, but the Mohawks have a distinct edge.

The Mohawks sealed the seed slot better and with less pressure while crumbling the top soil. The other wheels mostly pushed the slot together which made it prone to open back up with lack of rain. The Mohawks never had that problem.

In heavy residue, the Mohawks always sealed the slot while I had to crank down the pressure on the competitor's wheels to achieve the same results and sometimes still not seal the slot.



MOHAWK— DISTINCT FEATURES OVER THE ZIPPER

- ▶ Creates a flat ice cream cone shape with the soil in and above the seed V (the Zipper creates a more rounded ice cream cone shape)
- ▶ The Mohawk takes a plastic rim while the Zipper takes a metal rim
- ▶ Slightly less aggressive than the Zipper
- ▶ Mohawks are more economical when using your existing wheels and bearings

Mohawk wheels create a flat ice cream cone shape with the soil in and above the seed V



Farm Journal agronomist Ken Ferrie conducted a three-year study examining closing wheel designs, including the Mohawk. He classified the Mohawk as a firming spiked closing wheel, which are designed to provide both crushing action of the sidewall and firming above and around the seed. Ferrie concluded that in the toughest no-till conditions, wheels like the Mohawk get the job done the best.

WWW.SCHAFFERT.COM

Schaffert
manufacturing & sales

71495 ROAD 397
INDIANOLA, NE 69034
SALES@SCHAFFERT.COM

308-364-2607
800-382-2607