

FURROW V CLOSER MOUNTING INSTRUCTIONS

A/C 78-79 Air Planters

Before working on your planter or drill

DANGER: When storing or working on the planter always install cylinder stops or place the planter on stands to prevent personal injury or damage to the attachments.

PLEASE: Read instructions completely and verify all package contents before beginning installation

Step #1: Mount the FVC bracket to the planter unit using two 3/8" x 1-1/2" nuts and bolts (fig. (a)).

Step #2: assemble the disc to shaft with two 3/4" jam nuts so the disc is approximately 1-3/4" from the shaft. The bearing needs to be toward the outside (fig. (b)).

Step #3: position the shaft into the mounting bracket so that there is approximately 1" pitch out on the front of the disc (fig. (c)). Set the disc (with the planter in the soil) to a depth of 1/2" (3/4" max.) (fig. (d)). Tighten the set screws making minor adjustments to the Furrow V Closer while in the field. This will depend on the planting depth, speed and conditions. Re-check and tighten all nuts, bolts, and set screws.

A/C 78-79 Air Planters FVC Package Contents (per single row)	
HARDWARE KIT	
Item	Quantity
3/8" x 1-1/2" bolts.....	2
3/4 jam nuts	2
Instruction Sheet	1
PARTS LIST	
Item & Part #	Quantity
*NOTE: some hardware is installed at the factory.	

Important Points to Remember:

- When setting the pitch of the Furrow V Closer; lift the gauge wheel up so the FVC disc can properly be pitched. Gauge wheel tire will rest on FVC disc and will not hurt it.

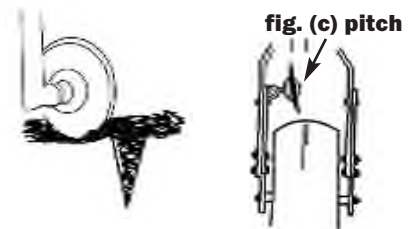
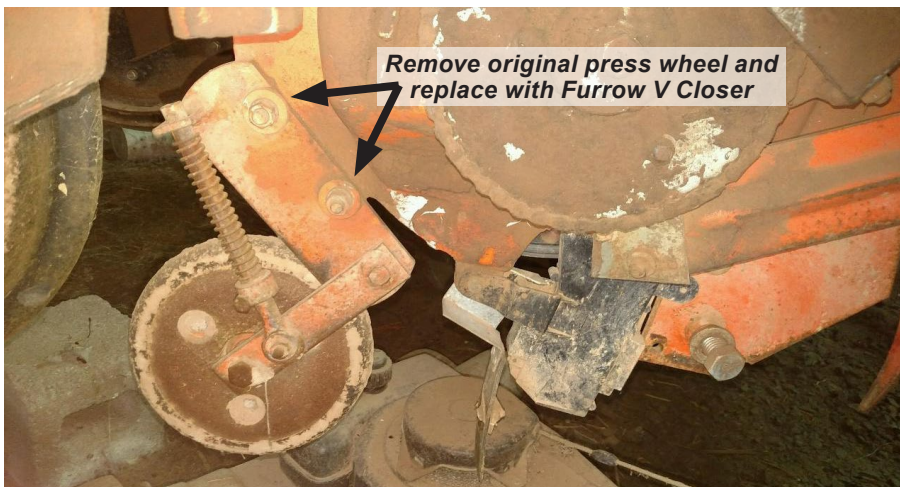


fig. (c) pitch adjustment

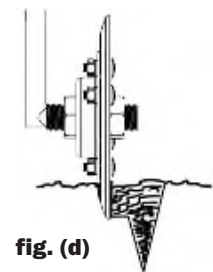


fig. (d)

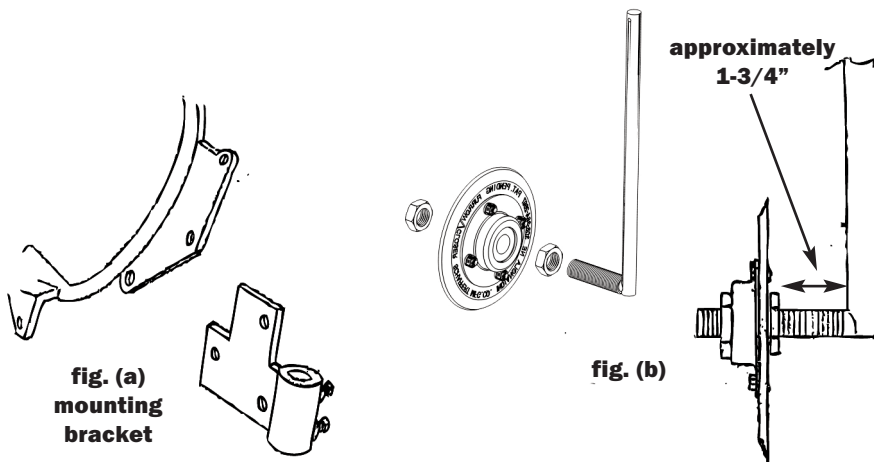


fig. (a)
mounting
bracket

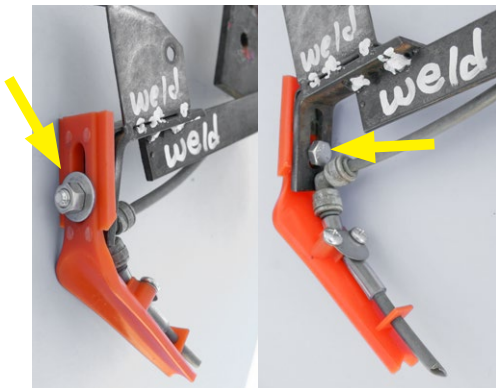
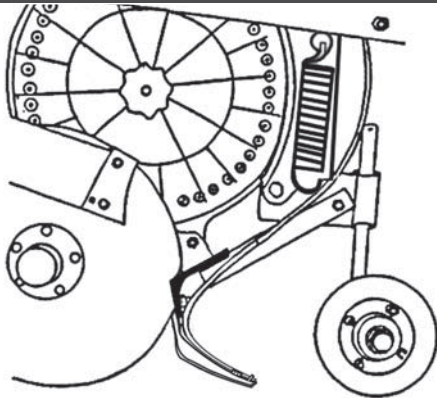
fig. (b)

approximately
1-3/4"

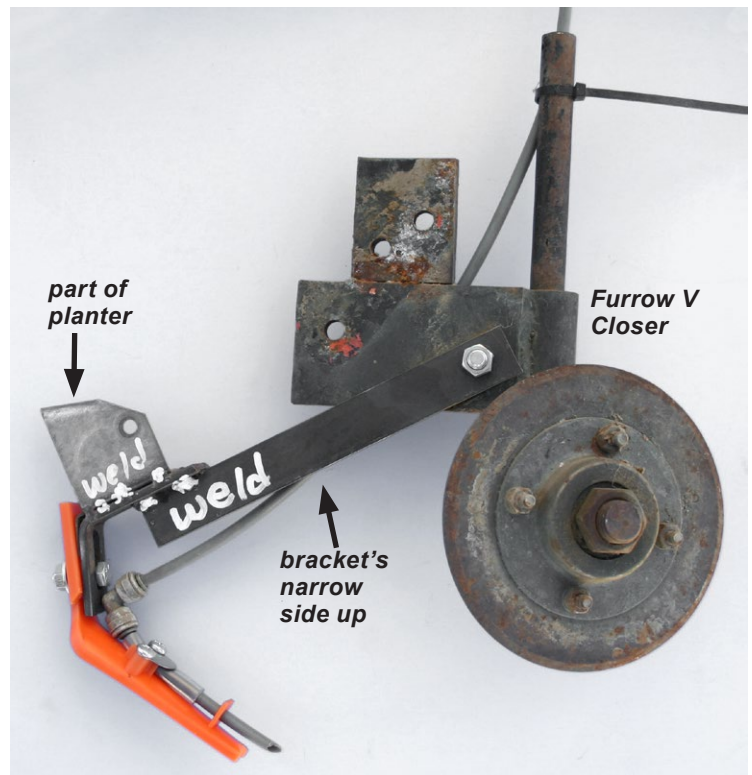
FURROW V CLOSER MOUNTING INSTRUCTIONS

A/C 78-79 Air Planters

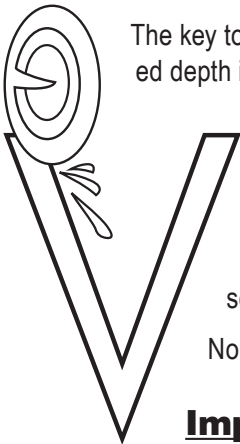
REBOUNDER WITH FURROW V CLOSER



Slide Rebounder all the way up so the bolt is at the bottom of the slot. The bolt should be at the bottom of the slot on the bracket as well.



FURROW V CLOSER® HELPFUL HINTS



The key to making the Furrow V Closer work is taking a few minutes to adjust and tighten it in the field. The recommended depth is 3/4" (1" maximum). Adjust to suit different soil types, moisture, or residue. Disc does not have to turn 100% of the time to work properly. Remember, every planter is different, fields can be different and soil conditions can change.

Make final adjustments of the FVC with the planter in the ground and stopped to check each row. You want the seed trench filled with soil ahead of the press tires. Be sure to tighten all bolts and all jam nuts and triple seat set screws (loosen and tighten 3 times). This removes any paint on the shaft and allows the end of the set screw to dig into the shaft, preventing the shaft from turning or slipping. Install 1/8" cotter pin in top of shaft.

Normally once the Furrow V Closers are set there is no adjusting necessary later.

Important Points to Remember

- Do not allow planter to rest on poly Furrow V Closer discs during storage! Furrow V Closer discs can warp!
- Check the tail section's full range of motion for adequate FVC clearance.
- If you have a field you don't need to use the FVC on, just remove the bearing, hub, and disc assembly and not the shaft it runs on. This saves time in re-setting the FVC when you need it. More pitch and less depth move the same amount of soil.
- Reduce the down pressure on the press wheels! This helps prevent compaction which allows quicker emergence and at the same time saves press wheel bearings.
- The FVC stitches the seed V shut so it doesn't crack back open on a hot, windy day after planting.